

# Threading

## Threading electric

### SUPERTRONIC 2000 (NPT)

Power threader  $\varnothing$  1/4 – 2"

For quick and effortless production of precise and reliable thread connections to approved standards



#### Product profile

##### APPLICATION AREA

For threading of :

**NPT:**  $\varnothing$  1/2 - 2"

**High reduction gears with spur wheel teeth**, induction tempered, 7 parallel gear shafts, each ball bearing mounted

**High, consistent power transmission** when fully loaded

##### Performance:

Strong 1,010 W motor, double insulated with VDE and CEE, interference free for reliable long-term use

##### Threading speed:

15 - 25 rpm, rapid reverse 60 rpm  
(4 x faster reverse with reverse drive)

**Maintenance friendly** with continuous lubrication

##### KEY FEATURES

- Secure grip in both turning directions with the hardened, interlocking prism pipe clamp
- Die heads are held firmly in place through direct seating with tension ring locking
- Off-set die head mounting allows for threading even close to walls
- Ideal for confined spaces (corners and shafts)
- User-friendly work with the large mechanism for switching directions
- Reliable motor for long-term use



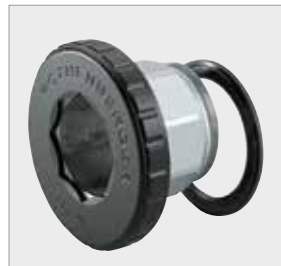
Easy insertion of the die heads



Use with roll grooving tool ROGROOVER



ROFIX adaptor (No. 71271)



High reduction gears





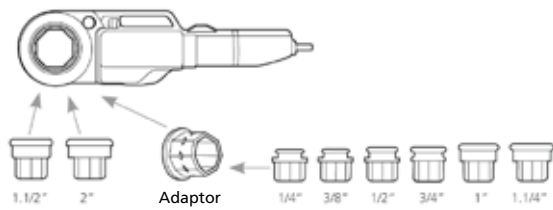
### SUPERTRONIC 2000 NPT set

**Set includes:** 71280(SUPERTRONIC 2000 with pipe clamp)  
 70912X(1/2") 70913X(3/4") 70914X(1") 70915X(1.1/4")  
 7.0849X(1.1/2") 70850X(2") 71271(ROFIX adaptor),  
 1000001953(ROCASE 6414 with inlay)

**Can also be used in combination with a roll grooving tool!**



Pipe clamp



Model	Description	kg	230 V	110 V
SUPERTRONIC 2000 set, NPT	1/2" - 3/4" - 1" - 1.1/4" - 1.1/2" - 2"	14.5	<b>71257</b>	<b>71259</b>

Work in confined spaces



Die heads with the tripod universal workbench

