

# DRAIN CLEANING

## Drum Machines



### K-400 Drum Machine

For 1 1/2" (30 mm) to 4" (110 mm) Drain Lines.

The Model K-400 offers several unique, user-friendly features to make the toughest drain cleaning jobs easier and hassle-free. Designed with a sleek profile, the Model K-400 is a great fit for drain cleaners, service plumbers, facility and institutional maintenance departments and property management companies.

- 3/8" (10 mm) cable best for 1 1/2" (40 mm) to 3" (75 mm) lines.
- 1/2" (12 mm) cable best for 3" (50 mm) to 4" (110 mm) lines.
- Integrated Transport Cart – allows for easy movement to and from the job site. Heavy-duty, large wheels easily navigate over bumps and up stairs.
- Retractable Handle – provides high-handle height during transport.
- Cable Control System – causes the drum to stop spinning when the blade becomes lodged in a blockage, limits potential for cable to flip-over in the drum and helps to indicate to operator when blockages are encountered.
- "Solid Core" Cable – uses tough 3/8" (10 mm) or 1/2" (12 mm) Integral Wound (IW) solid core cable that is rugged and kink resistant.
- AUTOFEED® – offered as an accessory, this patented, automatic cable feed powers cable in and out of the drain. Reverse the direction of the AUTOFEED and the cable feeds back into the drum.

### Specifications

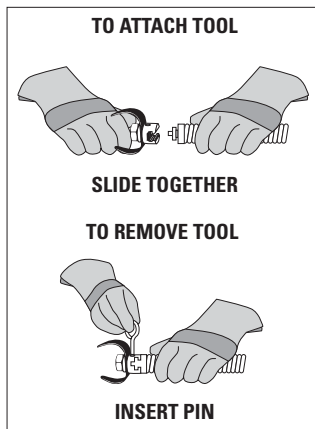
- Drum Capacity – 100' (30.5 m) of 3/8" (10 mm) Diameter Cable or 75' (22.5 m) of 1/2" (12 mm) Diameter Cable.
- Motor – 380W, motor spins cable at 165 RPM.
- Weight (Machine Only) – 45 lbs. (20.4 kg).
- Dimensions – Length 21" (53 cm) 24" (61 cm) with AUTOFEED, Height 23" (58.5 cm) Width 17" (43.2 cm).
- All Model K-400 machines are supplied with RIDGID® drain cleaning gloves, operator's manual and instructional video.

Catalog No.	Model No.	Description	Voltage		Weight	
			V	lb.	kg	
52363	K-400 w/C-32 IW	K-400 Machine w/Gloves & Std. Equipment: C-32 IW 3/8" x 75' Solid Core (Integral Wound) Cable, T-260 Tool Set	115	68	31.0	
26993	K-400 w/C-31 IW	K-400 Machine w/Gloves & Std. Equipment: C-31 IW 3/8" x 50' Solid Core (Integral Wound) Cable, T-260 Tool Set Includes: T-202 Bulb Auger, T-205 "C" Cutter, T-211 Spade Cutter, A-13 Coupling Pin	115	60	27.2	
26998	K-400 w/C-45 IW	K-400 Machine w/Gloves & Std. Equipment: C-45 IW 1/2" x 75' Solid Core (Integral Wound) Cable, T-260 Tool Set	115	81	37.0	
27003	K-400 w/C-44 IW	K-400 Machine w/Gloves & Std. Equipment: C-44 IW 1/2" x 50' Solid Core (Integral Wound) Cable, T-260 Tool Kit	115	68	31.0	
27008	K-400 AF w/C-32 IW	K-400 Machine w/Gloves & Std. Equipment: Two-Wheel Cart, AUTOFEED, C-32 IW 3/8" x 75' Solid Core (Integral Wound) Cable, T-260 Tool Set	115	79	36.0	
27013	K-400 AF w/C-45 IW	K-400 Machine w/Gloves & Std. Equipment: AUTOFEED, C-45 IW 1/2" x 75' Solid Core (Integral Wound) Cable, T-260 Tool Set	115	93	42.0	
27033	K-400 w/C-45 IW	K-400 Machine w/RIDGID Drain Cleaning Gloves – C-45 IW 1/2" (12 mm) x 75' (23 m) Solid Core (Integral Wound) Cable – T-260 Tool Set	230	81	37.0	
28103	K-400 AF w/C-45 IW	K-400 Machine w/RIDGID Drain Cleaning Gloves – AUTOFEED – C-45 IW 1/2" (12 mm) x 75' (23 m) Solid Core (Integral Wound) Cable – T-260 Tool Set	230	93	42.0	
28098	K-400 AF w/C-32 IW	K-400 Machine w/RIDGID Drain Cleaning Gloves – AUTOFEED – C-32 IW 3/8" (10 mm) x 75' (23 m) Solid Core (Integral Wound) Cable – T-260 Tool Set	230	79	36.0	

### Standard Equipment

Catalog No. Model No.	24853 K-400 w/C-32 IW	26993 K-400 w/C-31 IW	26998 K-400 w/C-45 IW	27003 K-400 w/C-44 IW	27008 K-400 AF w/C-32 IW	27013 K-400 AF w/C-45 IW
49002 - Tool Set [3/8" (10 mm) - K-400] Includes: – T-202 Bulb Auger – T-205 "C" Cutter – T-211 Spade Cutter – A-13 Pin Key	•	•	•	•	•	•
87582 - 3/8" (10 mm) x 75' (23 m) IWCable	•				•	
87577 - 3/8" (10 mm) x 50' (15 m) IW Cable		•				
87597 - 1/2" (12 mm) x 75' (23m) IW Cable			•			•
87592 - 1/2" (12 mm) x 50' (15 m) IW Cable				•		
26773 - K-400 AutoFeed Assembly					•	•

# DRAIN CLEANING



## (TOOLTIP)

Always start with a straight auger to and determine what you are trying to clean. Then chose the correct cutter to clear the drain.

	Catalog No.	Model No.	Description	Weight	
				lb.	kg
3/8" - 10 mm	87577	C-31IW	3/8" (10 mm) x 50' (15 m) IW Cable	18.0	8.2
	87582	C-32IW	3/8" (10 mm) x 75' (23 m) IWCable	26.0	11.8
	87587	C-33IW	3/8" (10 mm) x 100' (30 m) IW Cable	34.0	15.4
	91037	-	Repair End for 3/8" (10 mm) IW Cable	0.5	0.2
1/2" - 12 mm	87592	C-44IW	1/2" (12 mm) x 50' (15 m) IW Cable	18.0	8.2
	87597	C-45IW	1/2" (12 mm) x 75' (23m) IW Cable	26.0	11.8
	91042	-	Repair End for 1/2" (12 mm) IW Cable	0.6	0.3

## Tools

	Catalog No.	Model No.	Description	Replac. Blade(s)
	62990	T-201	Straight Auger, 5" (125 mm) Long	-
	62995	T-202	Bulb Auger, 1 1/8" (29 mm) O.D.	-
	63000	T-203	Bulb Auger 7/8" (22 mm) O.D.	-
	54837	T-204	"C" Cutter 1" (25 mm)	54832
	63005	T-205	"C" Cutter, 1 3/8" (35 mm)	97835
	63010	T-206	Funnel Auger, 3" (80 mm) Long	-
	63015	T-207	Spiral Cutter, 1 1/4" (32 mm)	97840
	63020	T-208	Spiral Cutter, 1 1/2" (40 mm)	97895
	63025	T-209	Spiral Cutter, 2" (50 mm)	97900
	63030	T-210	Spade Cutter, 1" (25 mm)	97905
	63035	T-211	Spade Cutter, 1 3/8" (35 mm)	97825
	63040	T-212	Spade Cutter, 1 3/4" (45 mm)	92850
	63045	T-213	4-Blade Cutter, 1" (25 mm)	97795
	63050	T-214	4-Blade Cutter, 1 3/8" (35 mm)	97910
	63055	T-215	4-Blade Cutter, 1 3/4" (45 mm)	97915
	63060	T-216	Chain Knocker, 2" (50 mm)	98000
	63065	T-217	Drop Head Auger, 4" (110 mm) Long	-
-	55457	T-225	Retrieving Auger	-
	52812	T-230	H-D "C" Cutter, 2" (50 mm)	92815
	52817	T-231	H-D "C" Cutter, 2 1/2" (65 mm)	92820
	52822	T-232	H-D "C" Cutter, 3" (80 mm)	92835
-	49002	T-260	Tool Set (3/8" (10 mm) - K-400) Includes: - T-202 Bulb Auger - T-205 "C" Cutter - T-211 Spade Cutter - A-13 Pin Key	-
-	12128	T-240	Tool Set (3/8" - K-380): T-202 Bulb Auger, T-211 Spade Cutter, A-13 Pin Key	-

## Accessories

	Catalog No.	Model No.	Description	Weight	
				lb.	kg
	41937		RIDGID Leather Drain Cleaning Gloves	1/2	0.20
	70032		RIDGID PVC Drain Cleaning Gloves	1/2	0.20
	59230	A-13	Pin Key For 3/8" (10 mm) Cable	1/2	0.20
	52343		K-400 AutoFeed Assembly	2	0.90
-	27048		K-400 Drum Assembly	10	4.50
-	92607		3/8" x 1/2" Tool Adaptor	1/2	0.20
-	92682		3/8" x 1/2" Drop Head Adaptor	1/2	0.20
-	92687		Drop Head Tool Adaptor 1/2" (12 mm)	1/2	0.20
-	26778		Guide Hose	2	0.90
-	51317	C-9	5/8" x 10' (3,1 m) Heavy- Duty Wind	5	2.20